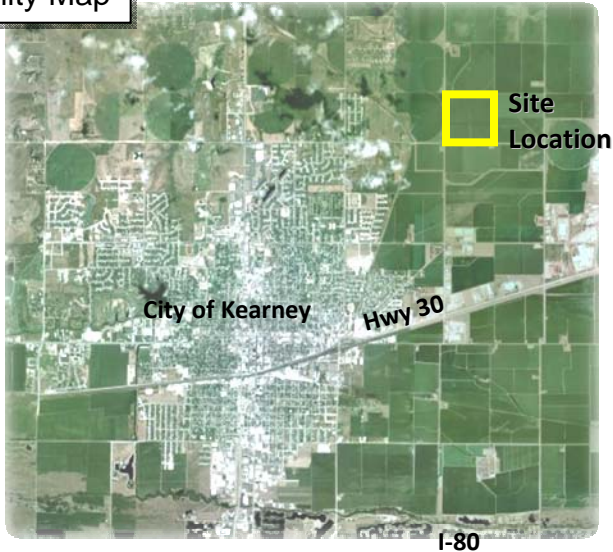


Technology Park & Data Center

Kearney, Nebraska

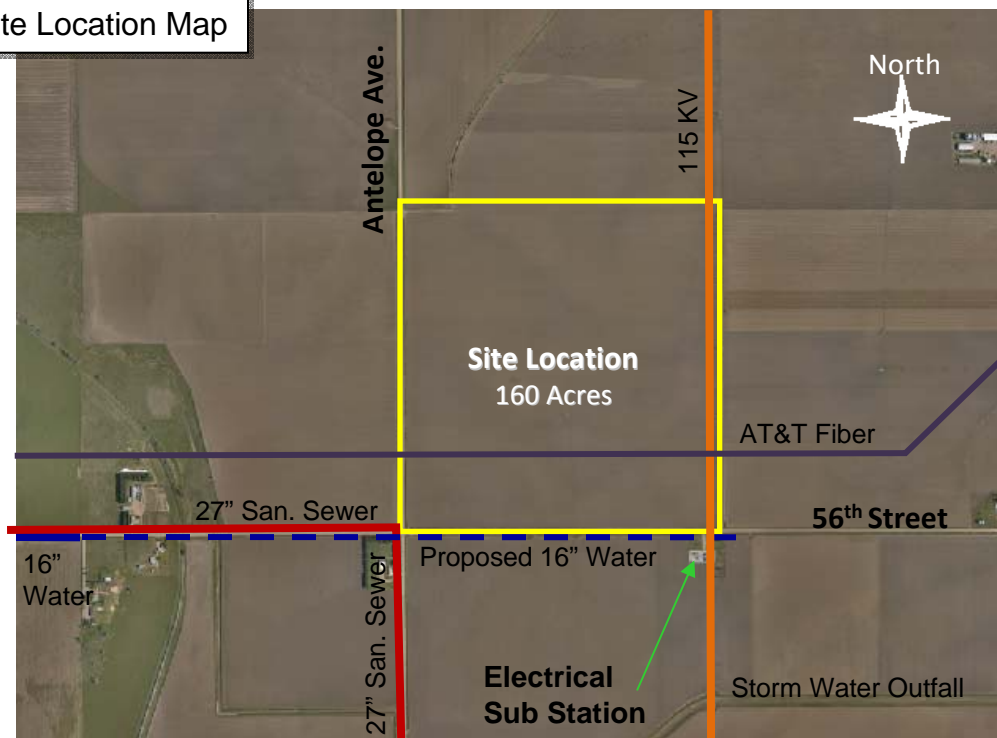
Vicinity Map



Kearney Advantages:

- Multiple transmission, sub transmission, and distribution lines
- 3.8-4.6 cents per KWH
- Multiple fiber carriers available
- Abundant water quantity & quality source
- Paved access
- Affordable land costs
- Central Time Zone
- Local workforce with strong technical skills
- State and local incentives

Site Location Map



Contacts:

Michael W. Morgan - City Manager - Mobile (308) 440-6555 - MMorgan@kearneygov.org

Stanley Clouse - Mobile (308) 627-6730 - saclous@nppd.com

www.cityofkearney.org

Kearney, Nebraska



Utilities

- Electric Service Provider: Nebraska Public Power District (NPPD)
 - 34.5 kV available to site for immediate use up to 10 MW
 - 115 kV available for up to 100+ MW capacity available to site from NPPD
 - Low cost reliable power - 3.8 - 4.6 cents/kilowatt hour
 - Multiple transmission, sub transmission, and distribution lines at multiple voltages with flexible dual feed solutions
 - Green Power Building Technologies encouraged
- Available Fiber Providers:
 - AT&T, Pinpoint, Windstream, Quest, Citizen / Frontier
- Water: City of Kearney
 - 16" water main along south side of site, fire flow 3000 gpm @ 65 psi, 2,000,000 gallons/day
- Wells:
 - 2 active registered irrigation wells at 1,790 gpm combined capacity for emergency backup
 - 112,753 gallons/day
- Waste Water Treatment: City of Kearney
 - 27" sewer main available on site
- Storm Water:
 - Outfall conveyance to Wood River & Platte River

Site Attributes:

- Zoning AG and AG adjacent on all sides
- Above 100 and 500 year flood plain
- Paved road along west side of property
- July 1, 2010 completion for paving along south side of property

Contacts:

Michael W. Morgan - City Manager - Mobile (308) 440-6555 - MMorgan@kearneygov.org

Stanley Clouse - Mobile (308) 627-6730 - saclous@nppd.com

www.cityofkearney.org