

## **ORGANIZATIONAL CHARTS**

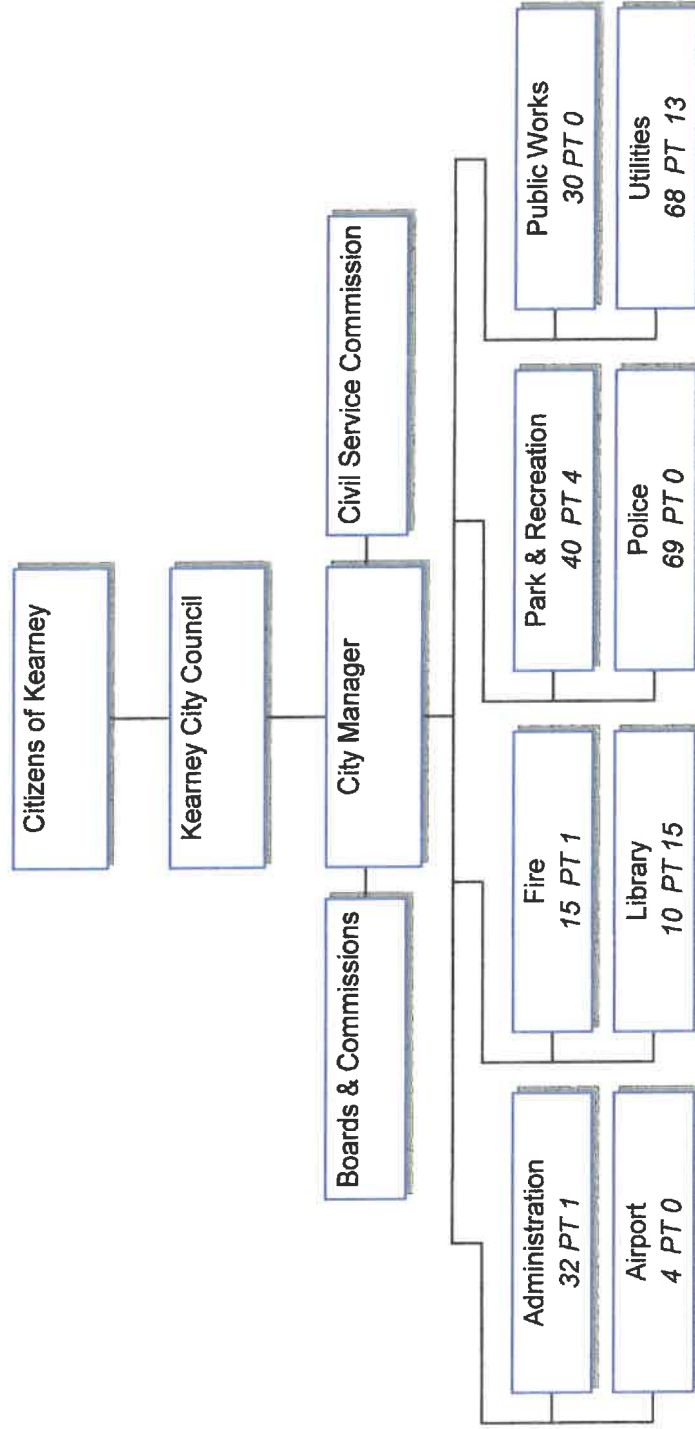


# CITY OF KEARNEY

## ORGANIZATIONAL CHARTS

2018 - 2019

# City of Kearney Organizational Chart



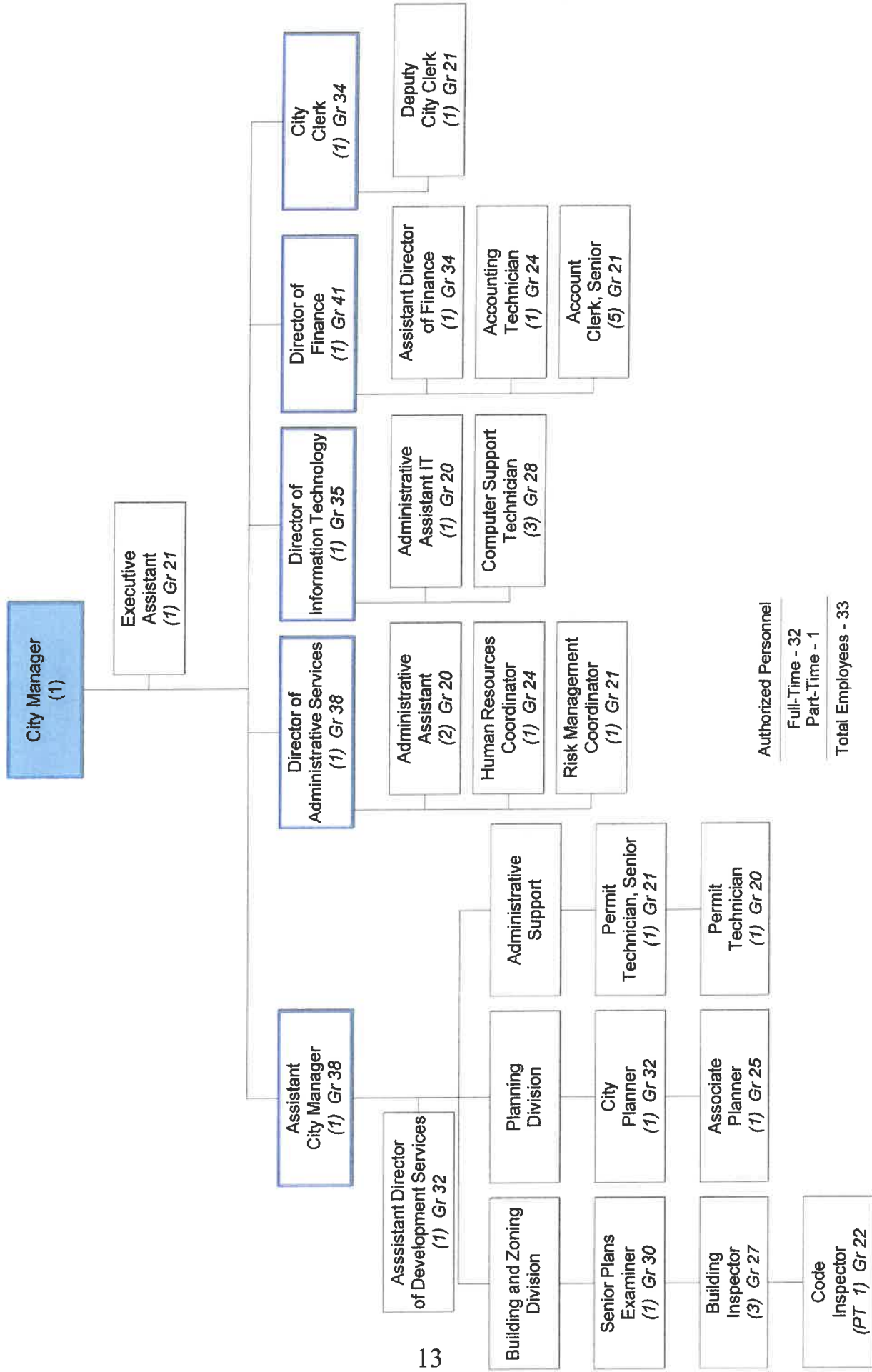
Authorized Personnel

Full-Time - 268  
Part-Time - 34

Total Employees - 302

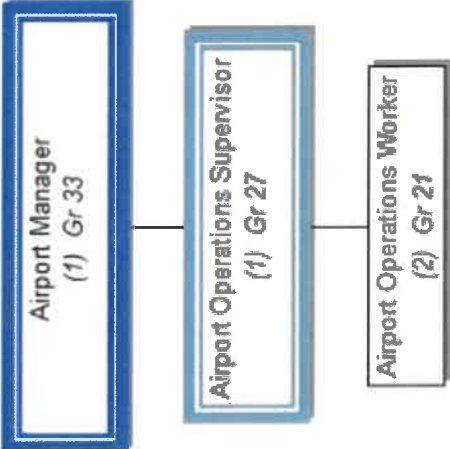
2018 - 2019

# Administration Department



Authorized Personnel  
 Full-Time - 32  
 Part-Time - 1  
 Total Employees - 33  
 2018 - 2019

# Airport Department



Authorized Personnel

---

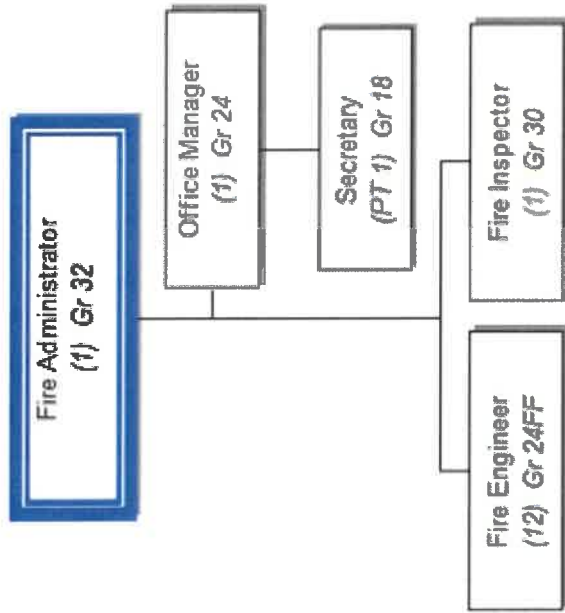
Full-Time - 4  
Part-Time - 0

---

Total Employees - 4

2018 - 2019

# Fire Department



---

**Authorized Personnel**

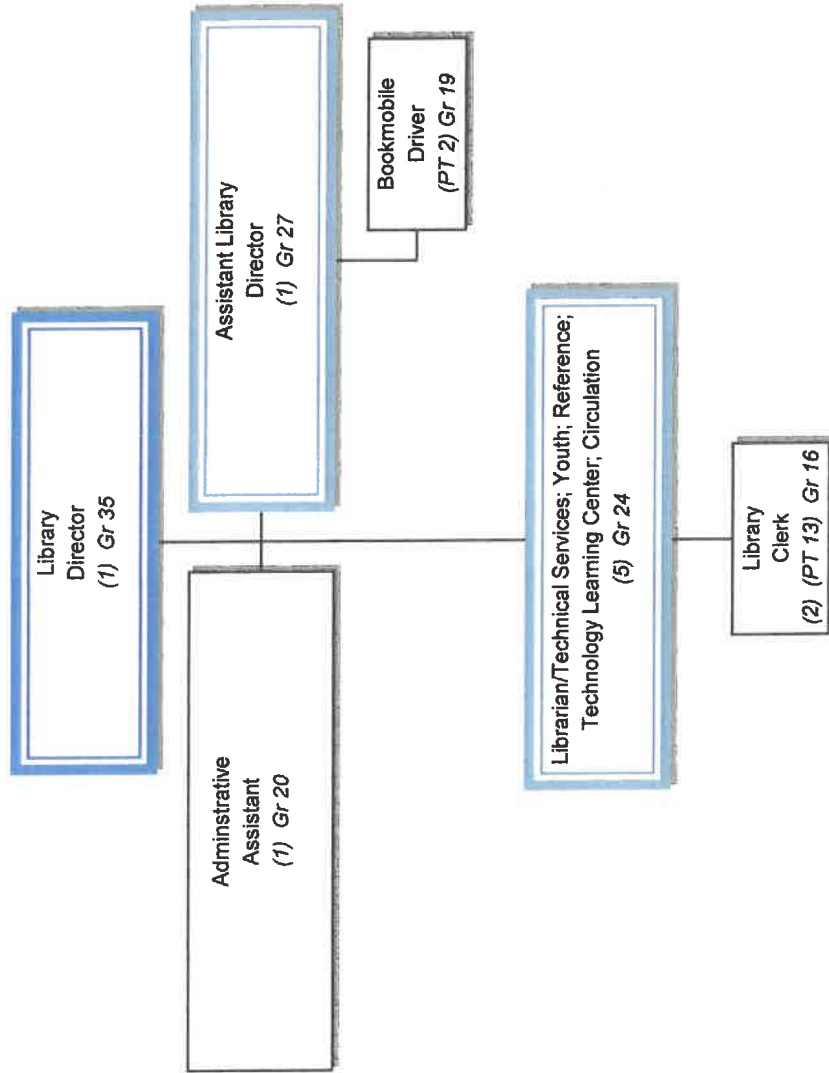
Full-Time - 15  
Part-Time - 1

---

**Total Employees - 16**

2018 - 2019

# Library Department



Authorized Personnel

Full-Time - 10

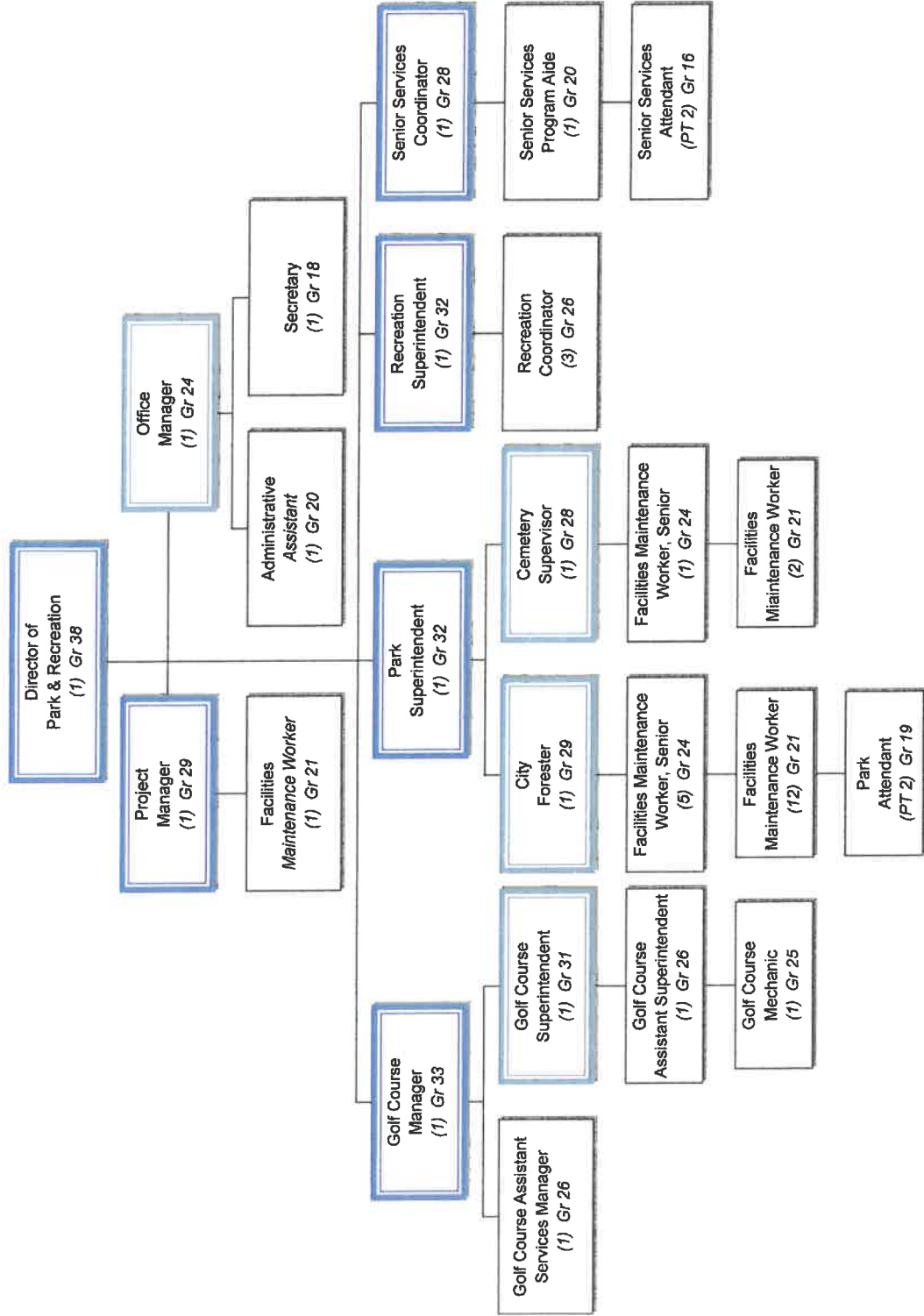
Part-Time - 15

Total Employees - 25

2018 - 2019



# Park & Recreation Department

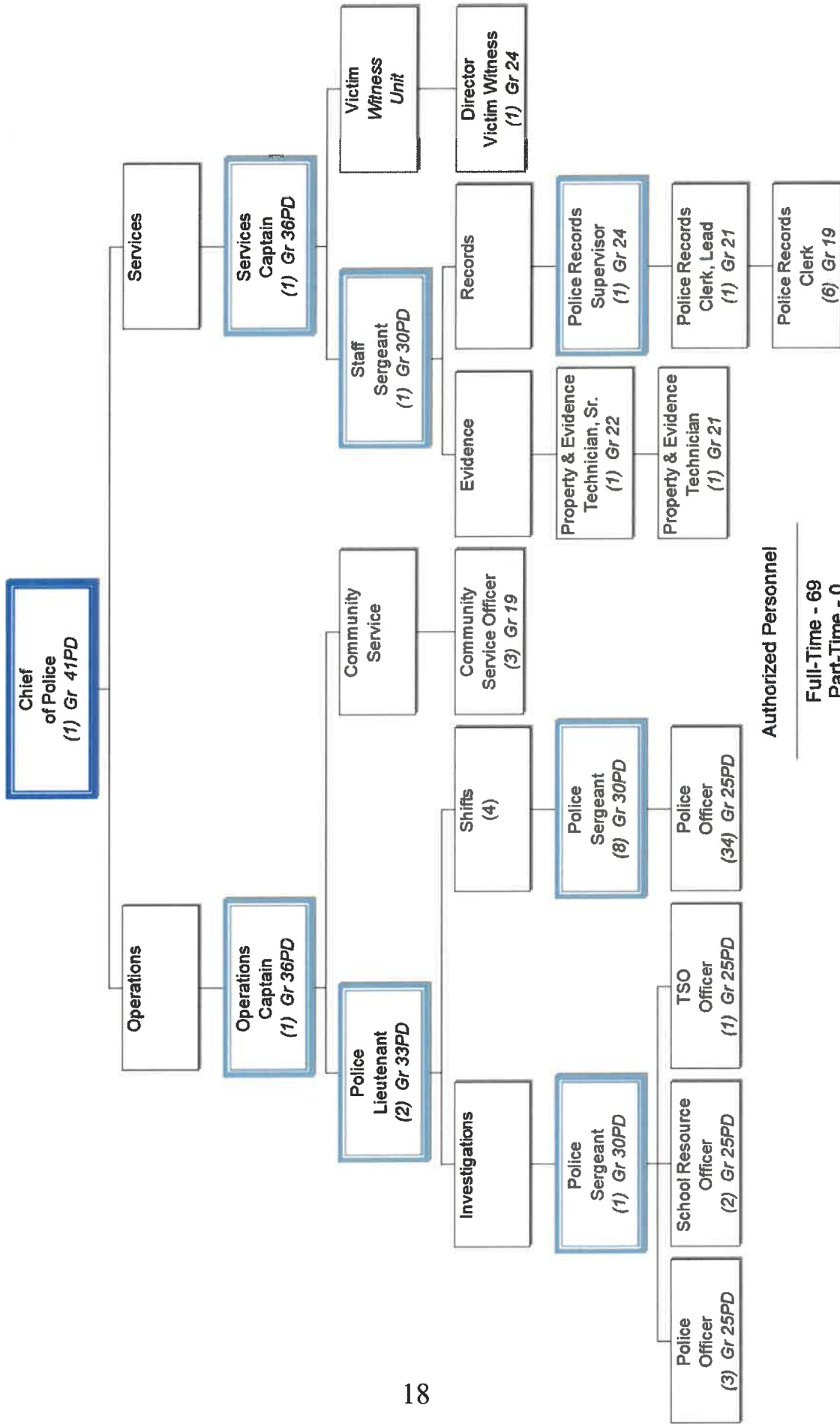


Authorized Personnel

Full-Time - 40  
Part-Time - 4

Total Employees - 44  
2018 - 2019

# Police Department



Authorized Personnel

---

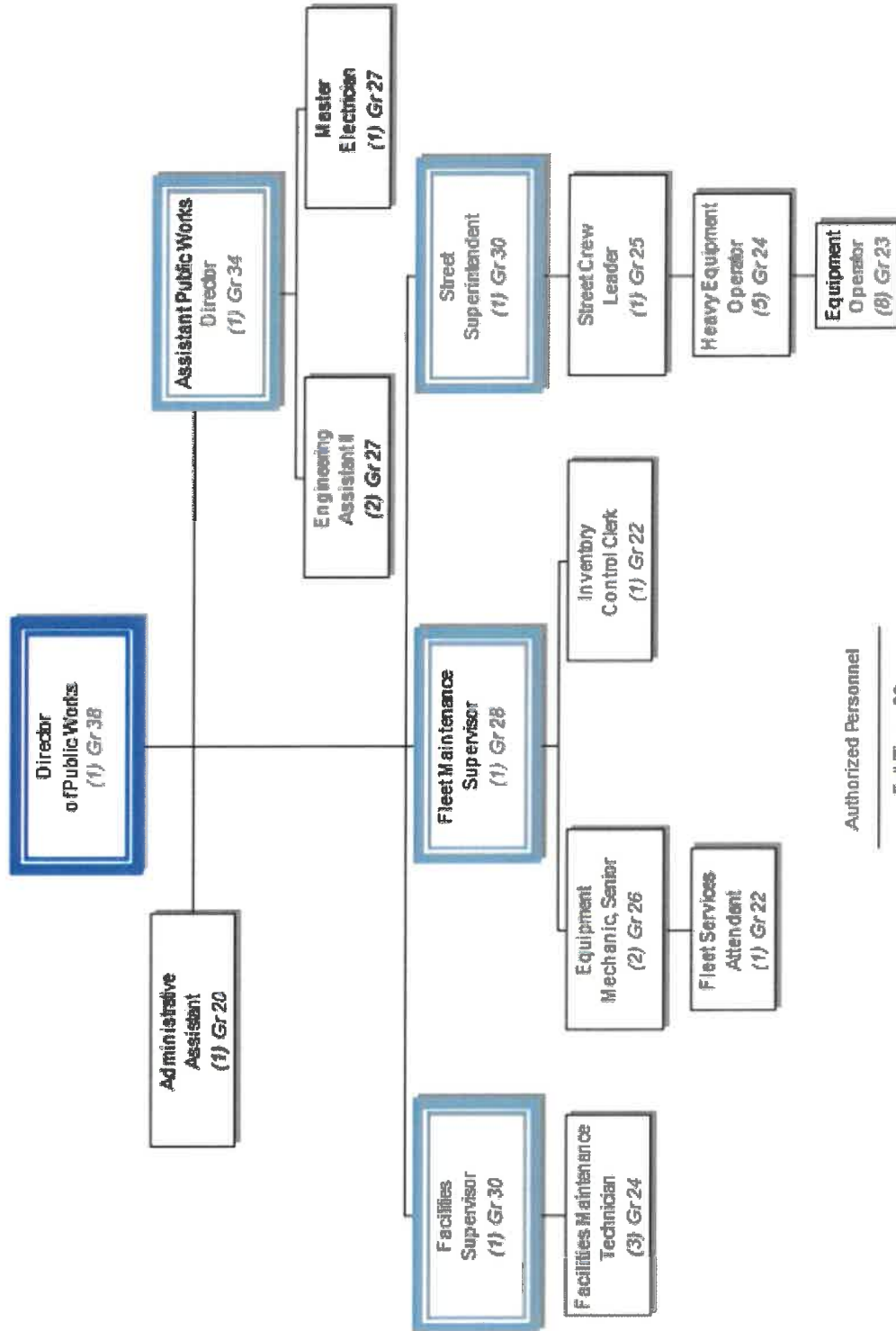
Full-Time - 69  
Part-Time - 0

---

Total Employees - 69

2018 - 2019

# Public Works Department



Authorized Personnel

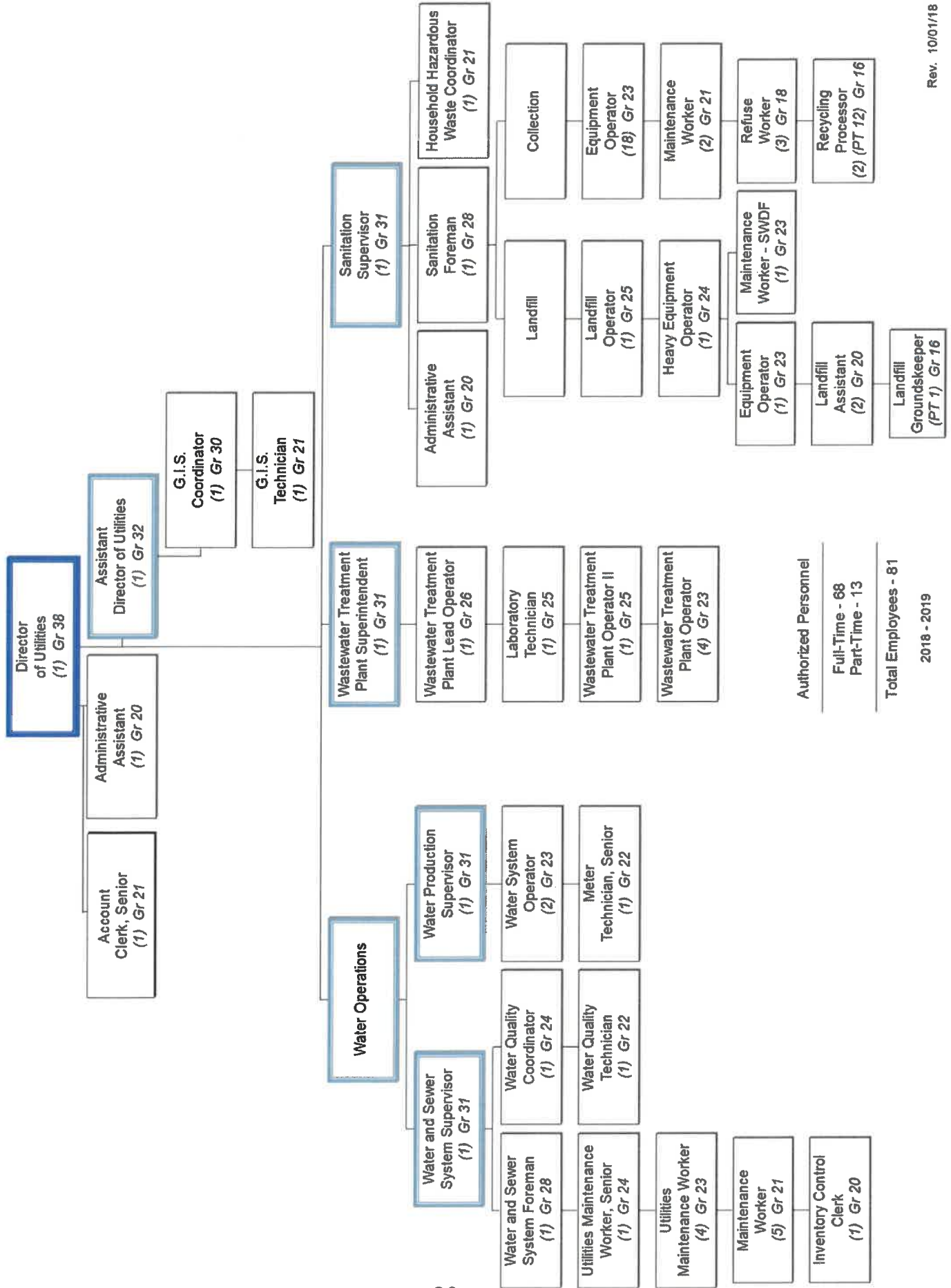
Full-Time - 30

Part-Time - 0

Total Employees - 30

2018 - 2019

# Utilities Department



Authorized Personnel  
 Full-Time - 68  
 Part-Time - 13  
 Total Employees - 81  
 2018 - 2019